

**OPEN HOUSE**  
**MARCH 26, 2023**  
**2 PM - 5 PM**

**DRY CREEK**  
**EST. 1907**  
**RANCH**

**2023 SPRING**  
**PRIVATE TREATY SALE**

**BARN OPENS IN MARCH**







# 2023 PRIVATE TREATY SALE RED ANGUS BULL OFFERING

## **BARN OPENS IN MARCH OPEN HOUSE MARCH 26, 2023**

### **SALE LOCATION**

7007 135th Ave. SW • Amidon, ND 58620

### **DIRECTIONS**

#### **From Hwy 67:**

- Turn west onto 70th St
- Drive 3 miles
- Turn south on 135th Ave
- First place you see

#### **From Hwy 85:**

- Turn South onto 138th Ave
- Follow road curve onto 66th St
- Road curves back south onto 137th Ave
- Go South until you hit 70th St
- Turn east and go two miles and turn south onto 135th Ave

### **CONTACT INFO**

Haley: 701.523.8285

Max: 406.461.3462

Email: [haley@drycreekranchnnd.com](mailto:haley@drycreekranchnnd.com)

Website: [www.drycreekranchnnd.com](http://www.drycreekranchnnd.com)

Address: 7007 135th Ave SW

Amidon, ND 58620

### **INSURANCE**

All buyers assume risk of the animal upon purchase and are encouraged to purchase insurance.

### **VIDEOS**

Videos may be viewed at [drycreekranchnnd.com](http://drycreekranchnnd.com).

### **VIEWING CATTLE**

Cattle will be available to be viewed at any time at the ranch.

## GENOMIC TESTING

All Red Angus bulls have been GGP-uLD tested for increased accuracy EPDs and parent verification.

## GUARANTEE

Bulls are guaranteed to breed. A breeding soundness exam will be done prior to delivery. If a bull is proven unable to breed from that exam, buyer will be given a full refund or purchase price credit to next year's bulls, or replacement of bull equal quality as acceptable to buyer. If problem arises with a bull, please notify us immediately.

## DELIVERY

We will deliver up to 300 miles at no charge. If you are farther than 300 miles, we will work to make arrangements with you. We will keep bulls and continue to develop them until April

when they are fertility tested. Following fertility testing, delivery arrangements will be made. Delivery of females is the buyer's responsibility.

## TERMS & CONDITIONS

Bulls are offered on a first come, first serve basis with offers being accepted beginning March 1. Terms of the sale are cash unless other arrangements have been made. We require 100% of purchase price at time of commitment.

## BULL DEVELOPMENT

We only keep the top end of calves as bulls. Our bulls are developed in a pasture environment on free choice hay and supplemented with a bull developer pellet along with a full mineral package. They are developed slowly for a moderate rate of gain with longevity the ultimate goal in mind. We want to develop bulls that are going to last for years to come.

# Top Dollar Angus Feeder Calf Program



## Promote Your Verified Genetic Investment

Top Dollar Angus is the industry leader in third-party genetic verification and marketing assistance for superior Angus and Red Angus-based feeder cattle. Our program stamps a unique identity on the 'best of the best' by verifying and then showcasing their genetic merit. The Top Dollar Angus team works directly with a large number of feedyards and buyers to provide them with documented superior

feeder cattle, coupled with genetic risk mitigation and the precision understanding they need to pursue your cattle with absolute confidence.

Top Dollar Angus enables cow-calf producers to benefit from the genetic value already built into their herds. Producers that invest in high-end genetics, as well as strong health and nutrition programs, need a means of positively differentiating their calves from average cattle. Top Dollar Angus does that. Industry demand is strong for genetically superior feeder calves with the right supporting documentation. Don't make buyers guess, let them know by putting the Top Dollar Angus badge of honor on your premium genetic investment.



*Contact our team for more information and a free evaluation:*



[www.topdollarangus.com](http://www.topdollarangus.com)

**Nate Smith**, General Manager • (620) 546-4839 • [nate@topdollarangus.com](mailto:nate@topdollarangus.com)

**Kaytlin Hokanson** • (307) 461-7687 • [kaytlin@topdollarangus.com](mailto:kaytlin@topdollarangus.com)

**Jake Feddes** • (406) 581-8157 • [jake@topdollarangus.com](mailto:jake@topdollarangus.com)

**Jim Akers** • (859) 361-4221 • [akersjim@bellsouth.net](mailto:akersjim@bellsouth.net)

**Jason Gagnon** • (559) 723-6362 • [jason@topdollarangus.com](mailto:jason@topdollarangus.com)

**Andy Albrecht** • (402) 922-1000 • [andy@topdollarangus.com](mailto:andy@topdollarangus.com)



# WELCOME!

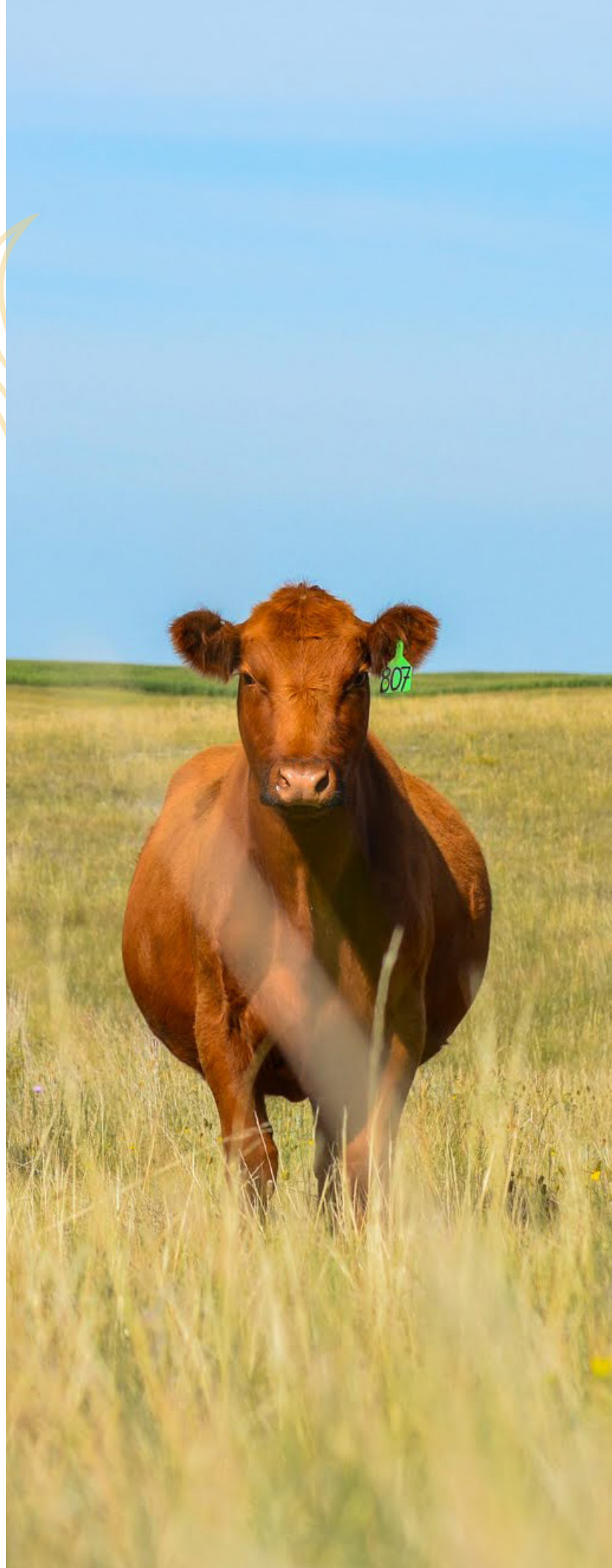
Welcome to our 2023 Private Treaty Sale! The last year was filled with snow, rain, and green grass. We are excited about this year's offering of bulls. This is the first calf crop out of BB Propulsion 9096, a Pie One of a Kind son. He throws some dark, cherry red calves loaded with muscle and bone. We also have been using HXC Allegiance 5502 for several years now on our commercial cows, and this is the first set of registered calves we gotten out of him. Another bull that throws dark red calves and excels in his growth and carcass traits while offering moderate birthweights.

This last spring we bought pairs from Jon Carlson with Carlson Angus. He had a great set of registered cows with genetics going back to Six Mile Red Angus out of Canada. His herd sire used on these cows is a U2 Resource bull sired by MRLA Resource. We have several females kept out of this sire, and we are looking forward to seeing what they can do for us! We lost this sire this fall, so we will only have one more year of calves to offer out of him.

New this year for us is our partnership with Top Dollar Angus! We have a few bulls that qualify for this program in hopes that they will help our commercial producers get some extra money in your pocket come sale day!

Thank you for taking a chance on our program! We strive to build a program with genetics you can trust! We look forward to seeing you at the ranch!

-Max, Haley, Little Max, and Hayes





# THE ROBISON FAMILY & DRY CREEK RANCH



Dry Creek Red Angus was started back in 2015 when we bought our first set of registered cows. Since then, we have been slowly growing the herd adding in genetics from Pieper Red Angus, Bieber Red Angus, Twedt Red Angus, Wasem Red Angus, and Six Mile Red Angus. We keep back our own registered heifers every year to continue to grow our operation. Here at Dry Creek Ranch, we aim to produce a low maintenance animal that will thrive in any environment thrown its way. We have shifted our perspectives from traditional thinking and try to push our cows to perform and maintain through the winter on stockpiled forage or crop residue, feeding the least amount of hay possible. Our goal is to produce moderate but practical cattle. We have moved away from selecting cattle strictly based on EPDs and growth traits. We believe EPDs can be an important tool to use in selection, but they do not always reflect the profitability of an animal. Our cattle are raised to be structurally correct, good footed, and easy fleshing. We also rely heavily on docility and cull any animals that do not meet that requirement, especially for the kid's sake who are right alongside us tagging calves and working cows.

Our business is truly a family operation. We rely on each other to make our ranch a success! Max takes charge on feeding, building rations, fencing, and so much more as we continue to build and make improvements to our home place. Haley leads genetic selection, marketing, book work, website management, kid chasing, and also helps out with the day to day tasks of chores, haying, etc. The kids are always right there with us watching and learning every aspect of the ranch!





# REFERENCE SIRE



## BB PROPULSION 9096

2022 is the first calf crop on the ground out of this sire, and we are excited about the calves we have! Talk about power! Dark cherry red and all the muscling you could ask for. This Pie One of Kind son is taking our program in the right direction!

Birth Date: 03/15/19 | Reg #: 4169122 | Category: 100% 1A | TAT: 9096

PIE ONE OF A KIND 352  
**PIE ONE OF A KIND 777**  
 PIE JULY DALLES 569

LARSON SUN KING 016  
**BB MS GINNIE 6256**  
 BB MS GINNIE 6019-2057

BUF CRK THE RIGHT KIND U199  
 PIE FAYETTE 1160  
 ANDRAS NEW DIRECTION R240  
 3422 PIE  
 BECKTON NEBULA P P707  
 LARSON TAMARA 545-556  
 MESSMER PACKER S008  
 MESSMER GINNIE S019

PROS	HB	GM	CED	BW	WW	YW	ADG	DMI	M	ME	HPG	CEM	ST	MARB	YG	CW	REA	FAT
116	78	37	12	-2.0	85	127	0.26	2.06	33	8	19	9	14	0.62	0.19	36	0.14	0.05
20%	14%	47%	54%	46%	4%	9%	33%	89%	5%	72%	1%	19%	60%	17%	92%	18%	45%	93%





1



# DCCC PROPULSION 2207



PIE ONE OF A KIND 777  
**BB PROPULSION 9096**  
 BB MS GINNIE 6259

FEDDES COMMANDER Y104  
**LMG MISS STAR 3231**  
 LMG MISS STAR 1338

PIE ONE OF A KIND 352  
 PIE JULY DALLES 569  
 LARSON SUN KING 016  
 BB MS GINNIE 6019-2057  
 MESSMER PACKER S0008  
 FEDDES BLOCKANA 351  
 LMG GILLS MILES AHEAD 9565  
 LMG MISS STAR

**Birth Date:** 3/17/22 | **Reg #:** 4625497 | **Category:** 100% 1A | **TAT:** 2207 | **Dam MPPA:** 107

ActBW	ActWW	PROS	HB	GM	CED	BW	WW	YW	ADG	DMI	M	ME	HPG	CEM	ST	MARB	YG	CW	REA	FAT
89	744	92	25	67	8	-0.8	81	126	0.28	1.79	33	9	13	6	10	0.69	0.22	51	0.22	0.05
		52%	94%	7%	94%	70%	3%	5%	15%	80%	4%	81%	24%	75%	94%	8%	99%	1%	30%	96%

*This bull has been a powerhouse since day one. Not only does he sit in the top 3% in WW and 5% in YW, but he also is Top Dollar Angus certified. His dam has a MPPA of 107. We've kept back every heifer out of this cow and even used one of her bull calves as one of our main herd sires for many years! This bull is backed with some strong genetics and the phenotype to match. He is one you won't want to miss!*





## DCCC PROPULSION 2214

PIE ONE OF A KIND 777

**BB PROPULSION 9096**

BB MS GINNIE 6259

LSF SRR TAKEOVER 5467C

**7VRA IZZY 8309**

MACK IZZY

PIE ONE OF A KIND 352

PIE JULY DALLES 569

LARSON SUN KING 016

BB MS GINNIE 6019-2057

LSF TAKEOVER 9943W

LSF BLACKBIRD N3080 X0406

5L INDEPENDENCE 560-298Y

JACOBSON 1030

Birth Date: 3/23/22 | Reg #: 4625523 | Category: 100% 1A | TAT: 2214 | Dam MPPA: 102

ActBW	ActWW	PROS	HB	GM	CED	BW	WW	YW	ADG	DMI	M	ME	HPG	CEM	ST	MARB	YG	CW	REA	FAT
83	679	84	48	35	11	-3	71	107	0.23	1.64	34	5	12	7	14	0.56	0.13	24	-0.05	0.02
		66%	65%	55%	72%	28%	15%	28%	51%	67%	3%	62%	32%	58%	73%	20%	84%	46%	86%	55%

Another standout from the start. 2214 caught our attention with attractive profile. He's put together so smoothly and has that dark, cherry red color and is backed with a strong set of growth traits! He will add some pounds come weaning!



## DCCC PROPULSION 2215

PIE ONE OF A KIND 777

**BB PROPULSION 9096**

BB MS GINNIE 6259

3SCC NAVIGATOR A448

**VGW A448-FLOWER 1553**

VGW JUL-FLOWER 0748

PIE ONE OF A KIND 352

PIE JULY DALLES 569

LARSON SUN KING 016

BB MS GINNIE 6019-2057

VGW NAVIGATOR 010

BSKF POLLY S208

BUF CRK THE RIGHT KIND U199

VGW JUL-FLOWER 1288

Birth Date: 3/24/22 | Reg #: 4625501 | Category: 100% 1A | TAT: 2215 | Dam MPPA: 104

ActBW	ActWW	PROS	HB	GM	CED	BW	WW	YW	ADG	DMI	M	ME	HPG	CEM	ST	MARB	YG	CW	REA	FAT
95	695	86	45	41	9	0.8	83	128	0.29	1.61	32	3	13	6	12	0.42	0.18	39	0.05	0.03
		61%	70%	42%	90%	91%	2%	4%	13%	64%	5%	51%	23%	67%	85%	47%	95%	7%	67%	71%

2215 is another impressive, dark red bull. This guy has tish more frame than the other Propulsion sons in the offering. He also sits in the top 2% for WW and 4% for YW. These Propulsion calves are known for adding growth.





4



## DCCC PROPULSION 2211

PIE ONE OF A KIND 777  
**BB PROPULSION 9096**  
 BB MS GINNIE 6259  
 RED CROWFOOT MOONSHINE 8081U  
**VGW MS-FLOWER 1422**  
 VGW LOG-FLOWER 9508

PIE ONE OF A KIND 352  
 PIE JULY DALLES 569  
 LARSON SUN KING 016  
 BB MS GINNIE 6019-2057  
 CROWFOOT 6004S  
 RED CROWFOOT BRNDINA 6359S  
 VGW GAME PLAN 508  
 VGW LOG-FLOWER 9508

Birth Date: 3/21/22 | Reg #: 4625499 | Category: 100% 1A | TAT: 2211 | Dam MPPA: 95

ActBW	ActWW	PROS	HB	GM	CED	BW	WW	YW	ADG	DMI	M	ME	HPG	CEM	ST	MARB	YG	CW	REA	FAT
80	559	69	66	3	13	22	64	95	0.19	1.61	23	3	13	9	15	0.51	0.18	1	-0.22	0.05
		85%	29%	98%	50%	64%	38%	55%	73%	64%	70%	49%	19%	18%	55%	28%	95%	98%	98%	98%

This bull's maternal traits on his dam's side and growth traits on the sire's side give him a balanced set of papers across the board. He will make some attractive females. He is from the same cowline as on of our herd sires, 7VRA TYSON 0722.



5



## DCCC PROPULSION 2206

PIE ONE OF A KIND 777  
**BB PROPULSION 9096**  
 BB MS GINNIE 6259

PIE ONE OF A KIND 352  
 PIE JULY DALLES 569  
 LARSON SUN KING 016  
 BB MS GINNIE 6019-2057

**DCCC 707**

Birth Date: 3/17/22 | Category: Commercial | TAT: 2206

ActBW	ActWW
77	631

This bull sells commercial as we had some issues with paperwork, so we couldn't get him registered. Don't let his registration status fool you. This guy has the look. He's clean fronted, long sided, and backed by some strong maternal cow lines. We've kept all the females out of his dam and grand dam.





6



## DCCC PROPULSION 2208

PIE ONE OF A KIND 777  
**BB PROPULSION 9096**  
 BB MS GINNIE 6259

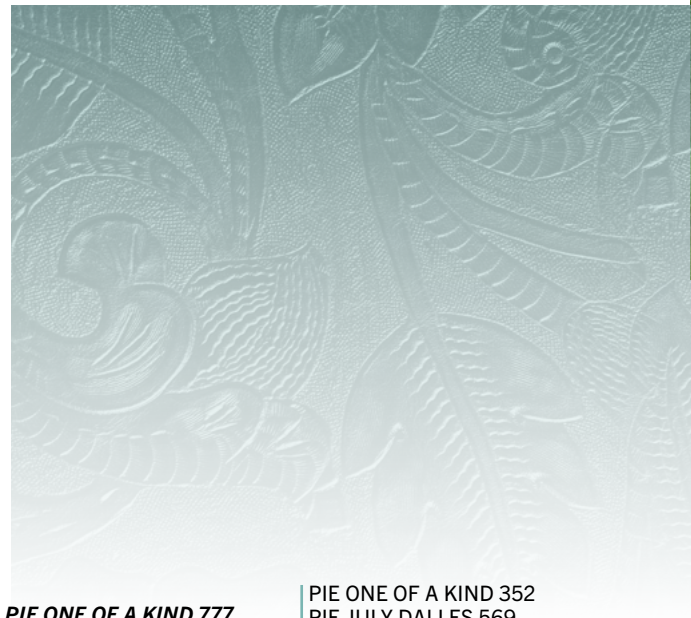
PIE ONE OF A KIND 352  
 PIE JULY DALLES 569  
 LARSON SUN KING 016  
 BB MS GINNIE 6019-2057

**DCCC 706**

Birth Date: 3/18/22 | Category: Commercial | TAT: 2208

ActBW	ActWW
80	652

Another commercial bull with issues on papers, but he is favorite of the group. The definition of moderate and heavy muscled. He has a friendly disposition and will easily catch your eye in the pen.



7



## DCCC PROPULSION 2209

PIE ONE OF A KIND 777  
**BB PROPULSION 9096**  
 BB MS GINNIE 6259

PIE ONE OF A KIND 352  
 PIE JULY DALLES 569  
 LARSON SUN KING 016  
 BB MS GINNIE 6019-2057

**DCCC 705**

Birth Date: 3/20/22 | Category: Commercial | TAT: 2209

ActBW	ActWW
83	689

The last commercial bull we are offering. 2209 comes from one of our best commercial cows whose lineage traces back to my dad's Red Angus herd with Milk Creek Red Angus bloodlines. BB Propulsion 9096 threw three uniform commercial calves for us, and we think they will do well on a commercial cow herd.



# REFERENCE SIRE



## HXC ALLEGIANCE 5503

Allegiance is a bull we have used for the past few years. 2022 is the first registered bulls we have out of him, but we have kept back many females sired by this bull. He throws some dark, cherry red calves. He really thrives when it comes to growth and carcass traits! We've also really liked the results on our commercial cows who's calves are used in our direct beef program.

Birth Date: 02/04/15 | Reg #: 3494126 | Category: 100% 1A | TAT: 5503

LSF NEXTPECTATION 0083X  
**LEACHMAN PLEDGE A282Z**  
 LCOC ZARA TG004

BECKTON NEBULA P P707  
**HXC 100Y**  
 HXC ZIMA 338N

LSF JBOB EXPECTATION 6034S  
 LSF CRYSTAL LA394 T7129  
 GAR-EGL PROTEGE  
 LCOC ZARA PG076  
 BECKTON NEBULA M045  
 BECKTON LANA M809 EP  
 BFCK CHEROKEE CNYN 4912  
 HXC SARA LB107

PROS	HB	GM	CED	BW	WW	YW	ADG	DMI	M	ME	HPG	CEM	ST	MARB	YG	CW	REA	FAT
119	29	89	12	-1.4	71	121	0.31	1.96	25	8	14	3	13	0.97	0.20	46	0.18	0.04
17%	84%	2%	60%	57%	23%	15%	11%	85%	52%	74%	17%	94%	73%	1%	93%	6%	38%	86%





## DCCC ALLEGIANCE 2203



LEACHMAN PLEDGE A282Z  
**HXC ALLEGIANCE 5502**  
 HXC 100Y

LSF SRR TAKEOVER 5467C  
**7VRA MAZZY 9509**  
 7VRA MAZZY 509

LSF NEXTPRECTATION 0083X  
 LCOC ZARA TG004  
 BECKTON NEBULA P P707  
 HXC ZIMA 338N  
 LSF TAKEOVER 9943W  
 LSF BLACKBIRD N3080 X0406  
 VGW PASSWORD 170  
 MACK IZZY

**Birth Date:** 3/16/22 | **Reg #:** 4625553 | **Category:** 100% 1A | **TAT:** 2203 | **Dam MPPA:** 103

ActBW	ActWW	PROS	HB	GM	CED	BW	WW	YW	ADG	DMI	M	ME	HPG	CEM	ST	MARB	YG	CW	REA	FAT
75	692	118	51	67	16	-4.4	58	100	0.26	1.6	30	7	12	7	16	0.78	0.15	26	0.04	0.04
		15%	59%	7%	12%	11%	61%	44%	25%	63%	13%	75%	45%	58%	37%	4%	89%	39%	69%	85%

2203 has been a standout among our Allegiance sons. He is also our best calving ease bull of the bunch and would work great on a set of heifers! Combined with his calving ease, he still qualifies for the Top Dollar Angus program. This bull combines calving ease and growth all in one package. His sire is also known for excelling in carcass traits. HXC Allegiance sits in the top 1% for marbling. You know his calves will have added pounds and grade well at the locker.





9



## DCCC ALLEGIANCE 2210



LEACHMAN PLEDGE A282Z

**HXC ALLEGIANCE 5502**  
HXC 100Y

KCC PINNACLE 949-109

**DCCC MISS STAR 9301**  
LMG MISS STAR 3231

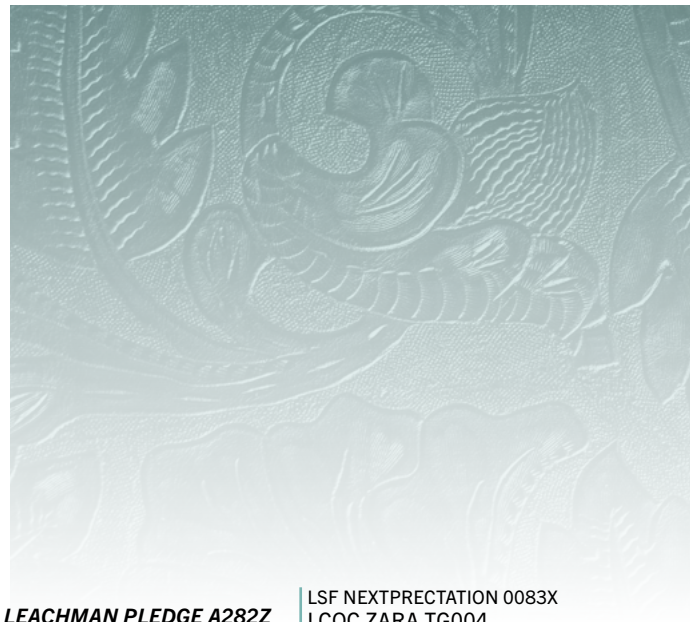
## DCCC MISS STAR 9301

LSF NEXTPRECTATION 0083X  
LCOC ZARA TG004  
BECKTON NEBULA P P707  
HXC ZIMA 338N  
HXC CONQUEST 4405P  
949 1KCC  
FEDDES COMMANDER Y104  
LMG MISS STAR 1338

Birth Date: 3/21/22 | Reg #: 4625529 | Category: 100% 1A | TAT: 2210 | Dam MPPA: 97

ActBW	ActWW	PROS	HB	GM	CED	BW	WW	YW	ADG	DMI	M	ME	HPG	CEM	ST	MARB	YG	CW	REA	FAT
75	629	140	58	82	12	-3.1	67	109	0.26	1.7	28	8	11	7	17	0.84	0.18	46	0.09	0.02
		3%	45%	2%	53%	26%	27%	24%	24%	73%	32%	79%	51%	58%	33%	2%	96%	2%	59%	62%

2210 is bull who has really impressed since weaning. He has packed on the pounds. He is also one of our Top Dollar Angus certified bulls, and he has the highest ProS epd out of the offering sitting in the top 4%. This bull's dam is a half sister to our lot 1 bull, 2207. She a three year old cow that has a ton of potential to raise some stellar calves in her future.



10



## DCCC ALLEGIANCE 2205

LEACHMAN PLEDGE A282Z

**HXC ALLEGIANCE 5502**  
HXC 100Y

LSF SRR TAKEOVER 5467C

**7VRA DORY 9704**  
7VRA DORY 704

LSF NEXTPRECTATION 0083X  
LCOC ZARA TG004  
BECKTON NEBULA P P707  
HXC ZIMA 338N  
LSF TAKEOVER 9943W  
LSF BLACKBIRD N3080 X0406  
BROWN JYJ REDEMPTION Y1334  
VGW Z416-DORY 1504

Birth Date: 3/17/22 | Reg #: 4625561 | Category: 100% 1A | TAT: 2205 | Dam MPPA: 100

ActBW	ActWW	PROS	HB	GM	CED	BW	WW	YW	ADG	DMI	M	ME	HPG	CEM	ST	MARB	YG	CW	REA	FAT
77	621	104	44	60	13	-2.8	64	104	0.25	1.65	28	7	12	5	15	0.96	0.3	23	-0.23	0.06
		32%	72%	12%	47%	32%	38%	35%	32%	68%	24%	76%	36%	84%	55%	1%	99%	50%	99%	99%

A dark, red bull with a great disposition and added length of body. He's got a balanced set of EPDs and also sits in the top 1% for marbling. Another bull I'd be comfortable putting on a set of heifers.



# REFERENCE SIRE



## U2 RESOURCE 189G

We bought this bull from Jon Carlson along with some registered pairs. We are excited to be able to incorporate some U2 genetics into our herd. He's super long bodied and has a nice big hip on him. He makes some very attractive females!

Birth Date: 01/20/19 | Reg #: 4604745 | Category: 100% 1A | TAT: 189G

*MRLA RELOAD 56C*  
**RED MRLA RESOURCE 137E**  
*MRLA MISS 4422B*

*RED U-2 STRIKE FORCE 24Y*  
**RED U-2 MS DYNAMO 35B**  
*RED U-2 MS DYNAMO 425X*

S A V RESOURCE 1441  
 RED MRLA MISS 641Y  
 S A V HARVESTOR 0338  
 MRLA MISS 433T  
 RED U2 MISSION 61W  
 RED U-2 LASSIE 8012U  
 RED FLYING K AMBUSH 51T  
 RED FLYING K MS DYNAMO 76J

PROS	HB	GM	CED	BW	WW	YW	ADG	DMI	M	ME	HPG	CEM	ST	MARB	YG	CW	REA	FAT
75	71	4	11	-0.5	46	67	0.13	0.98	21	-8	13	7	16	0.21	0.06	7	0.01	0.03
68%	22%	93%	70%	71%	92%	95%	95%	14%	79%	10%	27%	56%	36%	85%	45%	90%	70%	65%





11



## DCCC RESOURCE 2071

RED MRLA RESOURCE 137E  
**RED U2 RESOURCE 189 G**  
 RED U-2 MS DYNAMO  
 HXC CONQUEST 4405P  
**CARLSON SIERRA 401**  
 BITTERROOT SIERRA 201

MRLA RELOAD 56C  
 MRLA MISS 4422B  
 RED U-2 STRIKE FORCE 24Y  
 RED U-2 MS DYNAMO 425X  
 BECKTON JULIAN GG B571  
 HXC ELLIE MAY MA638  
 SIX MILE TIMBERLAKE 180T  
 BITTERROOT SIERRA 03

Birth Date: 3/21/22 | Reg #: 4648659 | Category: 100% 1A | TAT: 2071 | Dam MPPA: 104

ActBW	ActWW	PROS	HB	GM	CED	BW	WW	YW	ADG	DMI	M	ME	HPG	CEM	ST	MARB	YG	CW	REA	FAT
86	600	90	66	24	11	-2.3	52	81	0.18	1.02	25	-2	11	7	17	0.29	-0.06	10	0.32	0.01
		55%	29%	78%	72%	41%	80%	80%	78%	18%	52%	24%	62%	58%	26%	80%	5%	91%	15%	41%

2071 is a bull that we bought as pairs from Jon Carlson. He was a standout from the start. This cow line is known for its strong maternal traits. We have quite a few half sisters to this bull that are coming back into the herd. Phenotypically this bull puts it all together. He stands down on a ton of bone and base width. He's heavy muscled with that added length of body. This guy will give you a great set a females that you'll want to add back to the herd.





12



## DCCC RESOURCE 2138

RED MRLA RESOURCE 137E

**RED U2 RESOURCE 189 G**  
RED U-2 MS DYNAMO

RED 6 MILE FULL THROTTLE 171T

**CARLSON SIERRA 6010**  
BITTERROOT SIERRA 201

MRLA RELOAD 56C  
MRLA MISS 4422B

RED U-2 STRIKE FORCE 24Y  
RED U-2 MS DYNAMO 425X  
BECKTON JULIAN GG B571  
HXC ELLIE MAY MA638  
SIX MILE TIMBERLAKE 180T  
BITTERROOT SIERRA 03

Birth Date: 4/27/22 | Reg #: 4697465 | Category: 100% 1A | TAT: 2138 | Dam MPPA:

ActBW	ActWW	PROS	HB	GM	CED	BW	WW	YW	ADG	DMI	M	ME	HPG	CEM	ST	MARB	YG	CW	REA	FAT
70	625	70	67	4	11	-0.9	50	75	0.16	1.18	23	-2	10	7	17	0.2	0.07	10	-0.02	0.02
		84%	28%	98%	67%	67%	84%	88%	89%	27%	76%	21%	68%	61%	22%	94%	54%	91%	81%	62%

2138 is the youngest bull of the group, but you wouldn't know it. These Carlson cows have such strong maternal traits. These bulls will produce females you want to put back into the herd. Plus his sire throws a big hip onto these calves.



13



## DCCC RESOURCE 2098

RED MRLA RESOURCE 137E

**RED U2 RESOURCE 189 G**  
RED U-2 MS DYNAMO

WPRA LEGEND B413

**CARLSON PATTY 9178**  
CARLSON PATTY 502

MRLA RELOAD 56C  
MRLA MISS 4422B

RED U-2 STRIKE FORCE 24Y  
RED U-2 MS DYNAMO 425X  
RED LAZY MC EYE SPY 64Y  
WPRA EVERLEDA ENTENSE 610  
SIX MILE TIMBERLAKE 180T  
LAZY MC PATTY 301

Birth Date: 4/3/22 | Reg #: 4648679 | Category: 100% 1A | TAT: 2098 | Dam MPPA: 101

ActBW	ActWW	PROS	HB	GM	CED	BW	WW	YW	ADG	DMI	M	ME	HPG	CEM	ST	MARB	YG	CW	REA	FAT
84	571	33	60	-27	12	-2.3	35	52	0.1	1.35	24	-2	13	7	16	0	0.06	2	0.02	0.04
		99%	40%	99%	53%	41%	98%	99%	99%	40%	62%	22%	22%	58%	38%	99%	45%	98%	74%	85%

Another young April born calf. I can't stress enough the maternal side of these bloodlines. The longevity of these cows are stellar. And talk about uniformity.





14



# DCCC RESOURCE 2070

RED MRLA RESOURCE 137E  
**RED U2 RESOURCE 189 G**  
 RED U-2 MS DYNAMO  
 RED 6 MILE FULL THROTTLE 171T  
**CARLSON SIERRA 6008**  
 BITTERROOT SIERRA 201

MRLA RELOAD 56C  
 MRLA MISS 4422B  
 RED U-2 STRIKE FORCE 24Y  
 RED U-2 MS DYNAMO 425X  
 RD TER-RON FULLY LOADED 540R  
 RED SIX MILE WITZEL 360J  
 SIX MILE TIMBERLAKE 180T  
 BITTERROOT SIERRA 03

Birth Date: 3/20/22 | Reg #: 4648661 | Category: 100% 1A | TAT: 2070 | Dam MPPA: 94

ActBW	ActWW	PROS	HB	GM	CED	BW	WW	YW	ADG	DMI	M	ME	HPG	CEM	ST	MARB	YG	CW	REA	FAT
81	484	56	80	-24	13	-0.9	52	74	0.14	1.18	21	-2	10	8	19	0.13	0.2	0	-0.31	0.05
		95%	10%	99%	47%	67%	80%	88%	93%	27%	85%	21%	68%	34%	9%	98%	97%	99%	99%	97%

The last of the Resource sons in the offering. Another bull with some strong maternal traits with him being in the top 9% in Stayability. We actually lost this sire this fall, so we will only have one more set of calves out of him.





# REFERENCE SIRE



RS



## RED SIX MILE TIMBERLAKE 180T

When we purchased the registered set of cows from Jon Carlson last year, we also purchased some embryos sired by Timberlake. A large majority of those cows are all sired by him. He is a proven female-maker! We plan to put more embryos in this spring and also use him in our AI program.

Birth Date: 02/21/07 | Reg #: 1297264 | Category: 100% 1A | TAT: SIXM 180T

RED CC EXPANSION 5E  
**RED TOWAW INDEED 104H**  
 RED TOWAW MOLLY 67C

RED SHODEREE MARIAS 64H  
**RED SHODEREE ECHETA 193N**  
 RED SHODEREE ECHETA 6J

RED ROCK CREEK TREK  
 RED COULEE CREST ANNETTE 4C  
 RED ARSF BOLD EDITION 2A  
 RED TOWAW MOLLY 34R  
 RED GLACIER MARIAS 548  
 RED SHODEREE MIDNIGHT 11E  
 RED HLH BUSTER 406 603  
 RED SUNJAY ECHETA 38U

PROS	HB	GM	CED	BW	WW	YW	ADG	DMI	M	ME	HPG	CEM	ST	MARB	YG	CW	REA	FAT
101	85	16	11	-2.3	61	90	0.19	1.60	19	-6	16	8	16	0.41	0.14	17	-0.05	0.04
35%	9%	80%	67%	41%	55%	68%	79%	59%	91%	12%	8%	34%	40%	50%	80%	68%	80%	79%





15



## DCCC TIMBERLAKE 2119

RED TOWAW INDEED 104H  
**SIX MILE TIMBERLAKE 180T**  
 RED SHODEREE ECHETA 193N  
 RED SIX MILE AVIATOR 217P  
**BITTERROOT SIERA 03**  
 RED SIX MILE SIERA 257P

RED CC EXPANSION 5E  
 RED TOWAW MOLLY 67C  
 RED SHODEREE MARIAS 64H  
 RED SHODEREE ECHETA 6J  
 RED WILDMAN DENALI 19L  
 RED RSL SUE 400F  
 RED SIX MILE CUJO 800M  
 RED BOUNTY B MISS SIERA BAR

Birth Date: 4/16/22 | Reg #: 4648683 | Category: 100% 1A | TAT: 2119 | Dam MPPA: 103

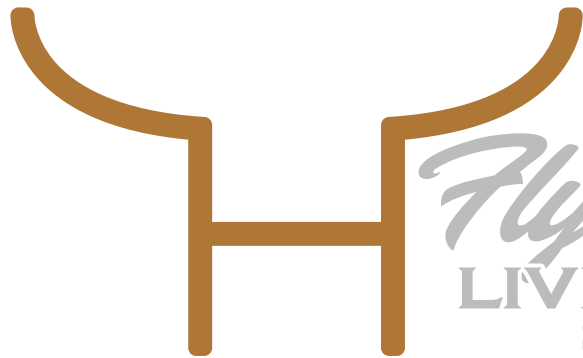
ActBW	ActWW	PROS	HB	GM	CED	BW	WW	YW	ADG	DMI	M	ME	HPG	CEM	ST	MARB	YG	CW	REA	FAT
91	605	52	47	5	9	-0.2	65	98	0.21	1.13	27	-5	12	7	12	0.09	0.08	21	-0.03	0
		96%	67%	97%	88%	80%	33%	48%	65%	23%	34%	15%	36%	63%	86%	99%	56%	59%	83%	23%

This bull is an ET calf out that we bought from Jon Carlson last spring. He is a full brother to Bitterroot Sierra 201 who is the grand dam to 2138 and 2071. We like the Timberlake bull and the females that come from him, so we plan to incorporate him into our AI program next year.



# THANK YOU FOR JOINING US FOR OUR 2023 PRIVATE TREATY SALE!

WE HOPE TO SEE YOU NEXT YEAR!



*Flying H*  
LIVESTOCK  
SERVICES



---

**CHRIS "CHEECH" HOLZNAGEL**  
**(701) 400.2900**

- ~ARROWQUIP REPRESENTATIVE
- ~FREEZE BRANDING
- ~SALE PREPARATION
- ~GENERAL LIVESTOCK WORK






# SELLING YOUR LAND OR EQUIPMENT?

**Pifer's**  
AUCTIONEERS

Land Auctions • Equipment Auctions • Land Sales  
Land Management • Real Estate • Equipment Appraisals



**Andy Mrnak**  
*VP of Equipment & Broker Assoc.*  
701.206.1095  
andy@pifers.com



**Jim Sabe**  
*Equipment & Land Sales*  
701.523.6283  
jsabe@pifers.com



**John Soreide**  
*Equipment Sales Manager*  
701.206.0761  
john@pifers.com



**Ali Pierce**  
*Real Estate Agent & Admin Asst.*  
701.206.1046  
ali@pifers.com

**WE ARE YOUR REGIONAL AUCTION & REAL ESTATE PROFESSIONALS!**

709 12th St. NE • Bowman, ND | [www.pifers.com](http://www.pifers.com) | Contact: 701.523.7366 |   



# Red Angus Guide to EPDS and Indexes

**ProS...** Profitability and Sustainability is an all-purpose index that predicts average economic differences in all segments in the beef supply chain. This index is a combination of the breeding objectives modeled in the HerdBuilder and GridMaster selection indexes. In this index, replacement heifers are retained from within the herd and all remaining progeny are fed out to slaughter and sold on a quality-based grid. Traits included in this index include calving ease, growth, HPG, STAY, Mature Weight, Dry Matter Intake and carcass traits. The resulting index is expressed in dollars per head born (Index/High Value).

**HB.....** HerdBuilder is a maternal selection index that predicts the economic differences of animals for traits that are important from conception through weaning. Expressed as dollars per head born, HB is calculated based on the scenario that bulls are mated to heifers and cows, replacement heifers are retained and all remaining progeny are marketed at weaning. Traits included in the HB index include Calving Ease Direct, Calving Ease Maternal, Weaning Weight, Milk, Mature Weight, Heifer Pregnancy and Stayability (Index/High Value).

**GM.....** GridMaster is a selection index that predicts the average economic difference of non-replacement calves through the post-weaning phase of production. GM places selection pressure on growth, feedyard performance and carcass traits. Expressed as dollars per head born, GM is calculated based on the scenario that progeny are fed out to slaughter and marketed on a quality-based carcass grid. Traits included in GM include Average Daily Gain, Carcass Weight, Dry Matter Intake, Marbling, Back Fat and Rib Eye Area (Index/High Value).

**CED.....** Calving Ease Direct predicts differences in the percent of calves born unassisted out of 2-year-old dams. (Percent/High Value)

**BW.....** Birth Weight predicts differences in actual birth weight of progeny. (Pounds/Low Value)

**WW.....** Weaning Weight predicts differences in 205-day weaning weight. (Pounds/High Value)

**YW.....** Yearling Weight predicts differences in 365-day yearling weight. (Pounds/High Value)

**ADG.....** Average Daily Gain predicts differences in weight gain between 205 and 365 days of age. (Pounds/High Value)

**DMI.....** Dry Matter Intake predicts differences in daily feed intake as measured in a feedlot during the post-weaning period. (Pounds/Low Value)

**MILK.....** Milk predicts differences in weaning weight attributed to the milking ability of the animal's daughters. (Pounds/High Value)

**ME.....** Maintenance Energy predicts the difference in maintenance energy requirements. (Mcal per Month/Low Value)

**HPG.....** Heifer Pregnancy predicts differences in the percent of daughters who are able to conceive and calve at 2 years of age following exposure to breeding. (Percent/High Value)

**CEM.....** Calving Ease Maternal predicts differences in the percent of daughters who are able to calve unassisted as 2-year-old heifers. (Percent/High Value)

**STAY.....** Stayability predicts differences in the ability of an animals' retained daughters to remain productive in the herd – calve every year – through 6 years of age. (Percent/High Value)

**MARB.....** Marbling predicts differences in marbling score – amount of intramuscular fat measured at the 13th rib. (Marbling Score Units/High Value)

**YG.....** Yield Grade predicts differences in USDA Yield Grade, which is calculated using CW, REA and Fat. (Yield Grade Units/Low Value)

**CW.....** Carcass Weight predicts differences in actual hot carcass weight. (Pounds/High Value)

**REA.....** Ribeye Area predicts differences in square inches of ribeye area measured at the 13th rib. (Square Inches/High Value)

**FAT.....** Fat predicts differences in the depth of backfat measured between the 12th and 13th ribs. (Inches/Low Value)

**RED ANGUS**  
RANCH TESTED. RANCHER TRUSTED.  
[RedAngus.org](http://RedAngus.org)







**Austin & Sheridan Visser**

**Reeder, ND**

**701-659-0172**

## **For Sale Private Treaty**

**Contact for Price**



Goose is a registered 9 year old dapple gray gelding. He has been one of my main go-to horses for the last year. He has been sorted on extensively at the sale barn as well as used on the ranch. Goose has done all the ranch chores. He is the first one to meet you at the gate and a joy to be around. We have started him in the team roping on both ends and is coming along nicely. He has a ground-covering walk that makes him a joy to ride. Contact us for more info!



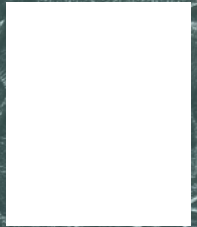
Merle is a registered 5 year old palomino gelding that has been in our family since a weanling. He has been used for all aspects of ranch work including sorting pairs, dragging calves to the fire, doctoring, and sorting yearlings as well as trailing cows in the badlands. Merle is a flashy mover that is definitely one-hand broke. Contact us for more info!







7007 135TH AVE SW  
AMIDON, ND 58620



[DRYCREEKRANCHND.COM](http://DRYCREEKRANCHND.COM)